

DESCRIPTION

The **GEFCO Select #EE138-Series Submersible Deck Box** provides wiring connections for embedded or niche type electrical fixtures utilizing rigid conduit and pulled wires. Available with up to (8) 3/4" female threaded side taps and up to (2) 1" female threaded side or bottom taps, the GEFCO Select #EE138-Series Deck Box should have all conduit connections made and conduit run prior to embedding in concrete. The top of the deck box is supplied with stainless steel screws and a neoprene gasket to ensure an airtight chamber for wiring connections.

The GEFCO Select #EE138 Junction Box is constructed of cast bronze, neoprene gasket and stainless steel fitted. This item is U.L. Listed for submersible applications.

When specifying, please use the following suffix to ensure the proper fitting is provided:

GEFCO Select #EE138-

- 11 one 1" side tap & one 3/4" side tap.
- 12 one 1" side tap & two 3/4" side taps.
- 13 one 1" side tap & three 3/4" side taps.
- 14 one 1" side tap & four 3/4" side taps.
- 15 one 1" side tap & five 3/4" side taps.
- 16 one 1" side tap & six 3/4" side taps.
- 17 one 1" bottom tap & seven 3/4" side taps.
- 18 one 1" bottom tap & eight 3/4" side taps.

- 21 two 1" side tap & one 3/4" side tap.
- 22 two 1" side tap & two 3/4" side taps.
- 23 two 1" side tap & three 3/4" side taps.
- 24 two 1" side tap & four 3/4" side taps.
- 25 two 1" side tap & five 3/4" side taps.
- 26 two 1" side tap & six 3/4" side taps.
- 27 two 1" bottom tap & seven 3/4" side taps.
- 28 two 1" bottom tap & eight 3/4" side taps.

TYPICAL SPECIFICATIONS:

*** GEFCO Select #EE138 Submersible Deck Box:**

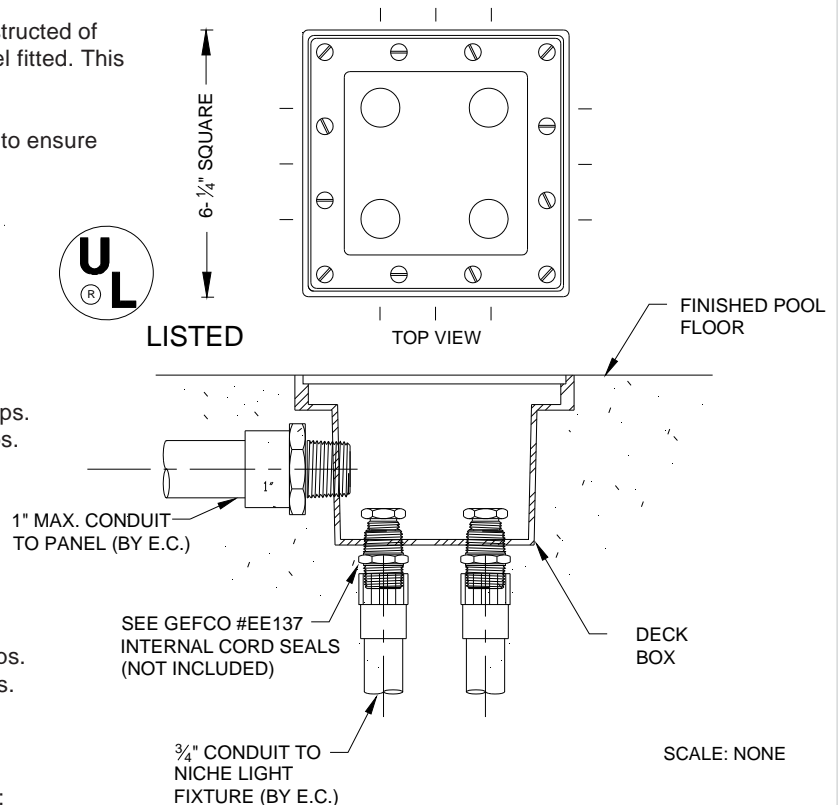
- cast bronze body and cover plate.
- stainless steel cover screws.
- neoprene cover gasket.
- integral grout frame for flush installation.
- separate grounding connection for each outlet.
- 42.72 cu.in. content.
- must use metallic conduit.
- XX 3/4" N.P.T. side tap connection.
- XX 1" N.P.T. side or bottom conduit entry.

Replacement Parts:

- A Cover Gasket
- B SST Screw Set

IMPORTANT

The designers, installers and end users utilizing the electrical equipment described herein assume full responsibility for the compliance with the N.E.C and it's applicable articles, intents and consequences. Where the manufacturer and/or the supplier of the electrical equipment described herein does not control the application or usage, he assumes no responsibility whatsoever for any consequences arising out of the application, installation and/or usage of this or any other equipment and/or materials



IMPORTANT INFORMATION

The 2008 NEC Section 680.52 (B)(2) specifies that all submersible junction boxes shall be potted with an approved potting compound. Use Scotch Cast #2112 as manufactured by 3M. The use of parafin wax is no longer permitted. Before potting the junction box use plumber's putty to seal of the conduit entrance to prevent leaking of potting compound into the conduit.

IMPORTANT

Dimensions, Manufacturers and/or Materials subject to change without notice