

DESCRIPTION

The **GEFCO Select #EE225 Series Adjustable Show Jet System** provides solid, infinitely adjustable, computer controlled valving to meet any show performance. The GEFCO Select #EE225 Series Adjustable Show Jet System can be connected to ALL types of spray effect jets. The GEFCO Select #EE225 Series Adjustable Show Jet can be mounted on GEFCO #PE109 Slab Penetrations as well as spray rings, manifolds and spray arcs.

IMPORTANT INFORMATION:

For best performance, the jets have to be operated with a linear undisturbed flow of water into the jet. Valves, reducers etc. can be used, but only 10 times the pipe diameter distant from the jet location.

TYPICAL SPECIFICATIONS:

- * **GEFCO Select #EE225 Adjustable Show Jet Control:**
- machined and investment cast #18-08 (304) SST.
- 3 each pressure ports 3/8" NPT.
- XX" flange connection (specify).
- Main Valve: NO other mechanical parts except diaphragm.
- EPDM or Silicone diaphragm materials (specify).
- XX # Flange (Specify 150 or 300 Class)
- all brass/ SST control valve, air loaded, 3/8" NPT Conn.
- 3/8" FLEX orifice valve, brass
- I/P transducer, 3-15 PSI, 0-10VDC (or 4-20mA)
- 2" dia. pressure gauge, 0-30 PSI
- ready for dry air, 10VDC signal & pilot water
- 2 ea. 3/8" pilot water shut-off/service valves
- factory assembled & tested
- accuracy +/- 5" water column
- 99% repeatability.
- min. switch speed: 0.1 Sec.

IMPORTANT NOTES:

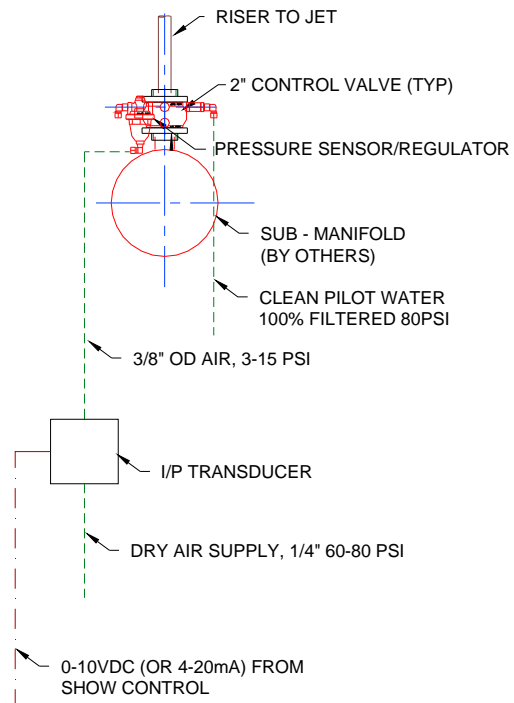
- **100% filtered (100 Micron) pilot water is required.**
- **main manifold pressure control is required.**
- **over sizing of manifold is required.**
- **pump speed/ torque control is required.**
- **300% normal system filter rate recommended.**
- **FINE MESH SCREENING OF ALL MANIFOLD WATER IS REQUIRED USING IN-LINE Y-STYLE STRAINER WITH MANUAL DRAIN DOWN - CONSULT FACTORY.**

Replacement Parts:

- Consult Factory

IMPORTANT

The designers, installers and end users utilizing the electrical equipment described herein assume full responsibility for the compliance with the N.E.C and it's applicable articles, intents and consequences. Where the manufacturer and/or the supplier of the electrical equipment described herein does not control the application or usage, he assumes no responsibility whatsoever for any consequences arising out of the application, installation and/or usage of this or any other equipment and/or materials



FLOW RATES:

#EE225	-20	-30	-40	-60	-80	-100	-120
T	2" FL	3" FL	4" FL	6" FL	8" FL	10" FL	12" FL
OH	2.50"	3.25"	4.00"	9.00"	11.00"	13.00"	15.25"
GPM	200	450	750	1750	3100	4900	7000
Cv	48	84	128	451	764	1443	2048
Δ P max.	150	150	150	150	150	150	150