

**DESCRIPTION**

The **GEFCO Select #SE122-Series Apron Sprayhead** is designed to be cast into concrete flush with surface installation in unsupervised public playgrounds. The sprayhead is vandal resistant, requires a special wrench to remove the nozzle plate from the body.

For ease of installation, the sprayheads are to be mounted upon a **GEFCO Select #SE138-07 Adjustment Union**. Before pouring the concrete, the sprayheads are to be set to proper level, then enclosed with an 8.0" form. After concrete is cured, remove forms, turn on water and adjust sprayheads to suit, then grout in spray heads so that they are approx. 1/8" above concrete surface. Spray Aprons are usually supplied with city water going to waste. Suggested operating control is **GEFCO Semi Automatic Actuating System**. The sprayheads are made of brass and bronze. Standard Spray Configuration: 12x0.094" orifices in a circle of 1.375" bored with an outside angle of 5 degrees from vertical. (Other configurations within the capability can be custom made.)

**TYPICAL SPECIFICATIONS:**

- \* **GEFCO Select #SE122-07** Spray Apron Sprayhead:
  - made of cast bronze body. - (12) 3/32" dia. holes.
  - brass vandal proof cover. - 3/4" NPT female connection.
- \* **GEFCO Select #SE122-A** Two Prong Wrench:
  - made of machined brass. - Two prong Tee-Handle.
- \* **GEFCO Select #SE122-C** Crown Jet Winter Cover:
  - vandal proof cover.
  - made of machined brass.

**IMPORTANT NOTE:**

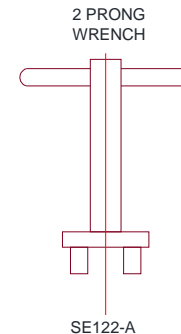
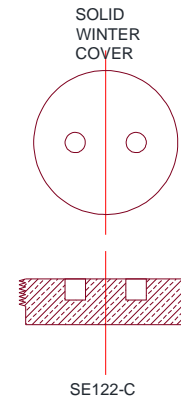
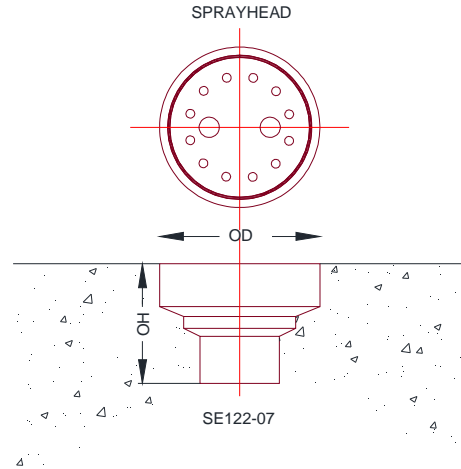
- **100 % potable water is recommended.**
- **If using a systems, they should designed with 100% filtered & treated water.**

**PERFORMANCES:**

SH (FT)	SD (FT)	GPM	FH
4	2	10	6
5	3	12	7
6	4	14	8
8	5	18	11
10	6	22	16

**DIMENSIONS:  
SE122-07**

T	3/4"
OH	2"
OD	2 1/2"
N	12
OS	3/32"



**IMPORTANT REQUIREMENT**

*Designers and Engineers shall be responsible for the accuracy of system flow rates and especially system head loss requirements. Stated flows and head pressure requirements for any listed spray height are required AT THE NOZZLE. Extrapolations for unlisted spray heights are at the sole responsibility of the Designers and/or Engineers.*

**IMPORTANT**

*Dimensions, Manufacturers and/or Materials subject to change without notice*