

DESCRIPTION

The **GEFCO Select #SE140-40 Rotating Base** is water driven. The rotator has 4" flange pipe (ASA or BSP) connection on top and bottom, with a full 3" through bore. The upper part with the drive arms rotates on the base on 2 sets of water lubricated stainless steel ball bearings. One set of bearings carries the load while the second set are guiding thrust bearings.

The rotators can carry a suggested maximum balance weight of app. 2200 LBS. (unbalanced loads should not exceed 880 LBS), the number of drive circle diameter depends on the load carried. The GEFCO Select #SE140 Bases are custom made to give performance specifications for installation into pools.

The rotator body must be installed perfectly vertical using a center point (bulls eye) liquid level, place it on top center and rotate. If base/riser pipe are not perfectly vertical, use (GEFCO #SE137-40). With a threaded through of the drive bearings in the base and the appearance of the drive jets, it is best that only the part above the drive arms of the rotator protrudes above water level. Drive jets are protected by a built in strainer.

For creating rotating spray effects use GEFCO Select #SE113-Series Distribution Chambers with 4" pipe flanges and bolt to rotator (Allow for pressure loss in 3" flow through in base). For rotating sculptures, it must be mounted on a flat bottom base, that can be bolted to the top flange with a waterproof gasket.

The GEFCO Select #SE140 Rotating Base is custom made to be given specifications of cast bronze, brass & copper, stainless steel fitted.

Due to its rotation and balanced/unbalanced weight, the riser pipe upon which the jet is mounted must be well anchored.

The GEFCO Select #SE140 Rotating Base can be installed on top of a GEFCO #SE109-40 Slab Penetration which will provide a rigid, non-corrosive water proofing penetration.

TYPICAL SPECIFICATIONS:

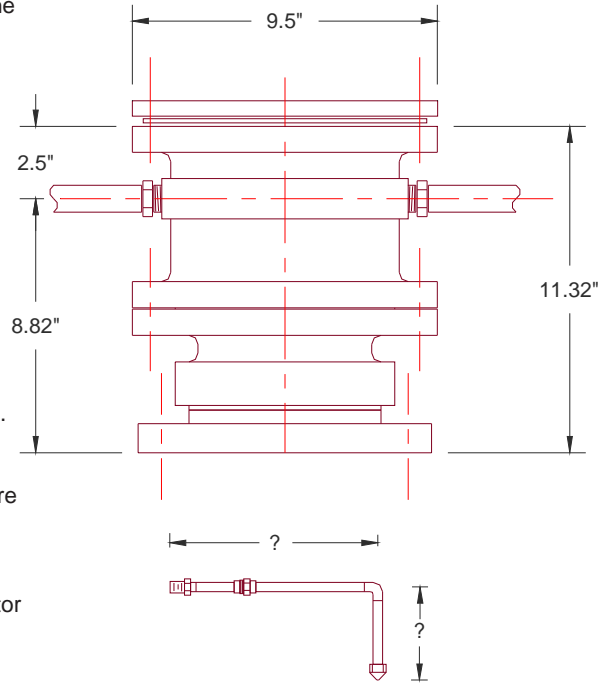
- * **GEFCO Select #SE140-40** Rotating Base:
 - made of cast bronze, brass fitted and SSTfitted
 - w/ or w/out center jet (specify) *
 - 4, 6 or 8 ea. 0.375" drive jets (specify)
 - 4" FL connection.

ADDITIONAL INFORMATION:

-Suction Straining required to be: MAX. 0.1875".

IMPORTANT REQUIREMENT

Designers and Engineers shall be responsible for the accuracy of system flow rates and especially system head loss requirements. Stated flows and head pressure requirements for any listed spray height are required AT THE NOZZLE. Extrapolations for unlisted spray heights are at the sole responsibility of the Designers and/or Engineers.



SPECIFY DRIVE ARM DIMENSIONS

SUGGESTED DRIVE REQUIREMENTS:				
BALANCED WEIGHT	DRIVE ARMS	DRIVE CIRCLE DIA.	GPM	FH* Ft.
220 LBS.	4	4Ft.	60	14
660 LBS.	4	5Ft.	80	20
1100 LBS.	6	6Ft.	160	28
2200 LBS.	8	10Ft.	250	40

IMPORTANT

Dimensions, Manufacturers and/or Materials subject to change without notice