

**DESCRIPTION**

The **GEFCO Select #SE142 Aeration Jet with Debris Screen** will produce a highly aerated column of white water. The Aeration Jets are extremely economical to use as they provide the least possible flow of water for the maximum visual effect. The white water of the Aeration Jet makes an aesthetic statement in both a daytime operation, or at night, when used in combination with any type of underwater illumination by Georgia Fountain Company. The Aeration Jet must be fed with a non-turbulent water supply and protected with a surge collar in small or circular pools to reduce wave action on the water surface.

Aeration jets require a constant water level. They can also be ordered without debris strainers at the base of the jet for systems with clean treated water where floating debris is non-existent (see GEFCO Select SE104 Series).

The jet is equipped with a built-in swivel base to provide adjustment up to 17 degrees in any direction from vertical.

Air To Water Adjustment Collar adjustment rules are:

- Sleeve up: for more heavier and lower sprays.
- Sleeve down: for more lighter and higher sprays.

The Aeration Jet can be installed on a GEFCO #PE109-Series Slab Penetration, which will provide a rigid, non-corrosive, waterproofing penetration. The Aeration Jet can also be mounted on a spray pod, spray ring, spray bar, or spray arc.

**ADDITIONAL INFORMATION:**

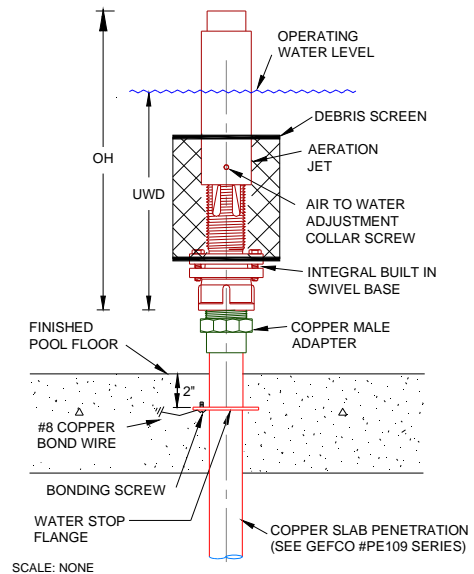
- \* See column 'SS' in table below for strainer sizes recommended.
- \* Aeration Jets require a constant water level.

**PERFORMANCE**

#SE142	-07	-08	-10	-12	-15	-20	-25	-30	-40	-41											
T	3/4" NPT	3/4" NPT	1" NPT	1-1/4" NPT	1-1/2" NPT	2" NPT	2-1/2" NPT	3" NPT	4" NPT	4" FLG											
MWD	9"	9"	12"	12"	14"	18"	24"	24"	30"	30"											
DO	0.625"	0.750"	1.000"	1.250"	1.500"	2.000"	2.500"	3.000"	3.750"	3.750"											
OH	7.500"	7.750"	9.500"	10.500"	13.500"	15.500"	17.920"	21.500"	25.000"	25.000"											
UWD	6.300"	6.400"	7.875"	8.900"	11.500"	13.500"	13.980"	19.185"	21.750"	21.750"											
SS	0.125"	0.1875"	0.200"	0.250"	0.325"	0.500"	0.500"	0.625"	0.750"	1.000"											
SPRAY HEIGHT	GPM	FT HEAD	GPM	FT HEAD	GPM	FT HEAD	GPM	FT HEAD	GPM	FT HEAD	GPM	FT HEAD	GPM	FT HEAD	GPM	FT HEAD	GPM	FT HEAD	GPM	FT HEAD	
3'	3	21	4	16	7	13	9	12	11	11											
5'	4	35	6	10	8	20	11	16	13	15	26	10									
8' 10"	5	53	8	30	10	30	14	22	17	20	36	16	63	30	90	27	106	21	154	17	
15'	6	66	9	36	11	36	15	27	20	23	40	18	69	33	98	30	130	24	172	19	
20'			11	54	13	54	18	39	25	32	46	26	88	40	119	39	162	30	207	25	
25'					15	70	20	50	29	40	53	33	101	48	135	48	188	41	232	33	
30'							23	61	31	49	59	40	117	55	146	57				288	
40'							25	73	34	61	65	46	127	63	156	66	230	58	333	47	
50'									37	74	72	59	148	76	177	82	262	74	378	60	
60'											77	71	166	92	199	102	288	87	440	73	
80'												183	109	185	115	217	120	330	120	495	105
100'																246	157	365	146	586	130
150'																275	195	413	186	700	169
																			542	306	288

**IMPORTANT REQUIREMENT**

Designers and Engineers shall be responsible for the accuracy of system flow rates and especially system head loss requirements. Stated flows and head pressure requirements for any listed spray height are required AT THE NOZZLE. Extrapolations for unlisted spray heights are at the sole responsibility of the Designers and/or Engineers.



**TYPICAL SPECIFICATIONS:**

\* **GEFCO Select #SE142-XX Aeration Jet w/ Debris Screen:**

- made of cast bronze, brass, copper and stainless steel fasteners.
- debris screen, made of cast bronze & brass.
- 17 degree adjust ability from vertical.
- adjustable collar for aeration effect.
- (T)" NPT female connection (specify).

**IMPORTANT**

Dimensions, Manufacturers and/or Materials subject to change without notice