

**DESCRIPTION**

The **GEFCO Select #SE145-60 Columnar Jet** will produce a narrow hollow column of water consisting of many clear streams of water. This hollow jet is recommended for height ranges from 15' to 60'. It is recommended that this spray effect be supplied with a non-turbulent water supply and protected with a surge collar in small or circular pools to reduce wave action on the water surface.

A GEFCO Select #SE137-Series Adjustment Flange is designed to correct the vertical adjustment of sprays up to 5 degrees off of vertical, for larger adjustment use a GEFCO Select #SE138-Series Swivel Union (both #SE137-Series and #SE138-Series can be ordered separately).

The Columnar Jet can be installed on a GEFCO #PE109-Series Slab Penetration which will provide a rigid, non corrosive, water-proofing penetration.

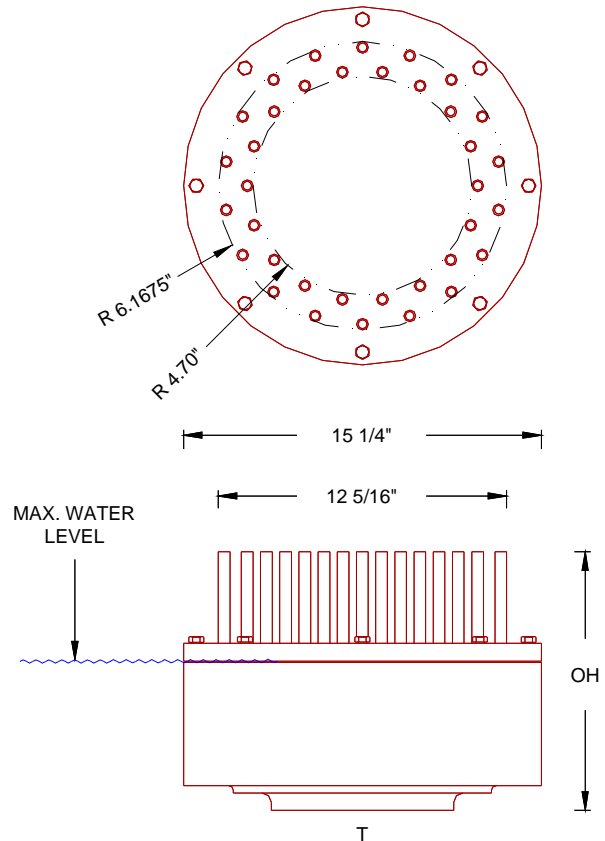
**TYPICAL SPECIFICATIONS:**

- \* **GEFCO Select #SE145-60** Columnar Jet:
  - made of cast bronze, brass and stainless steel construction.
  - (36) 3/16" x 4" brass jets.
  - 6" N.P.T. connection.

**ADDITIONAL INFORMATION:**

\* **Suction Straining required to be: 0.185" MAX.**

#SE145-60			
T	6" NPS		
DO	0.1875"		
OH	15.25"		
SH	GPM	FH	
15'	360	24	
20'	420	29	
25'	480	39	
30'	530	43	
35'	580	49	
40'	630	56	
50'	707	68	
60'	785	85	



FOR PERFORMANCES BELOW 15 Ft. see GEFCO Select #SE145-40 with 4" pipe connection.

**IMPORTANT REQUIREMENT**

Designers and Engineers shall be responsible for the accuracy of system flow rates and especially system head loss requirements. Stated flows and head pressure requirements for any listed spray height are required AT THE NOZZLE. Extrapolations for unlisted spray heights are at the sole responsibility of the Designers and/or Engineers.

**IMPORTANT**

Dimensions, Manufacturers and/or Materials subject to change without notice