

DESCRIPTION

The **GEFCO Select #SE157-Series Lake Cascade Jet** is water level dependent and produces an intermediate diameter, 'White Water' spray effect the is highly visible for long distances. Normal application is in floating lake fountains and lake aerators that require a highly visible spray effect with an approximate spray width at its base of up to 1/3 of spray height. The spray effect is adjustable as to appearance and height by a proportioning of the pond water drawn in by the jet. The air intake is fixed. The adjustment does not affect the 'UWD'. The water intake ports adjustment can be affected from above water level by turning the lift bolts (4) with a wrench clockwise (1/2 turn each, one after the other) to raise the spray, counter clockwise to lower the spray. These must be protected from pool surging when used in smaller pools or ponds. Best, solid, spray effects are within the lower 2/3 of the shown spray heights. A GEFCO Select #SE137-Series Adjustment Flange is designed to correct the vertical adjustment of sprays up to 5 degrees off of vertical. The Water Level Independent Foam Jet can be installed on a GEFCO #PE109-Series Slab Penetration which will provide a rigid non-corrosive, waterproofing penetration.

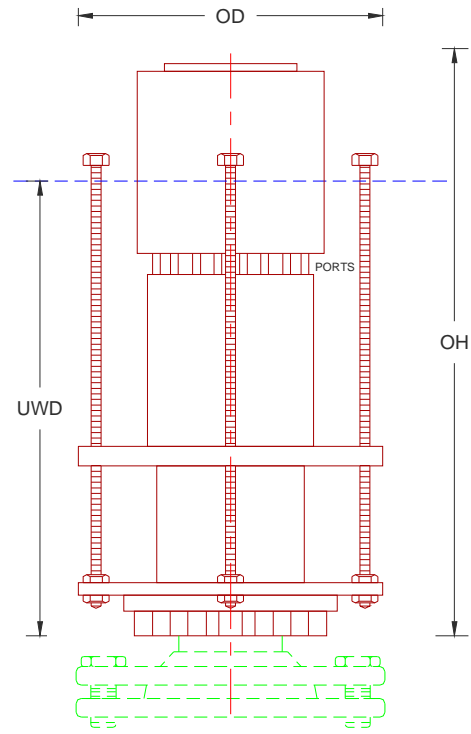
TYPICAL SPECIFICATIONS:

- * **GEFCO Select #SE157 Series Lake Cascade Jet:**
- made of cast bronze and brass fitted.
- SST adjustment.
- 6" NPT connection.

ADDITIONAL INFORMATION:

- Pressures greater than shown may cause damage to jets.

The performances shown are for undisturbed, linear inflow into a jet at given 'UWD' immersion and shown port openings. Performances are extremely variable due to different 'UWD' immersions and water intake adjustment. Maximum height with exclusion of pond water can reach up to app. within 20 % of nozzle pressure. Minimum height with entry ports fully open can be app. less than 50 % of shown values. For directional adjustment mount jet on to a GEFCO Select #SE137 Series Adjustment Flange. Supply pipe must be flow sized.



SCALE: NONE

DIMENSIONS: (IN INCHES)				
SS	0.625"			
T	6"			
OH	22.64"			
OD	13.00"			
UWD	20.00"			
PERFORMANCES:				
Ports Open:	@ 1.250"	@ 2.000"		
SH	GPM	FH	GPM	FH
10	410	25	500	30
20	590	50	600	60
50	925	125	1100	150
80	1200	200	1300	240
100	1300	250	1400	300

IMPORTANT REQUIREMENT

Designers and Engineers shall be responsible for the accuracy of system flow rates and especially system head loss requirements. Stated flows and head pressure requirements for any listed spray height are required AT THE NOZZLE. Extrapolations for unlisted spray heights are at the sole responsibility of the Designers and/or Engineers.

IMPORTANT

Dimensions, Manufacturers and/or Materials subject to change without notice