

DESCRIPTION

The GEFCO #SE900 MODULAR DECK JET SYSTEM has been in use since 1986 in the use for designs of dry plaza fountains. The modular deck jet system can be equipped with any number of types of water level independent jets. The sample shown is a stream jet with 4 lights.

The modular deck jet system can be equipped without lights or with up to 4 ea. MR16 lights with max. 75W 12VAC lamps or LED color changing lighting system utilizing DMX 512 color control.

TYPICAL SPECIFICATIONS:

*** GEFCO Select #SE900 Modular Deck Jet System:**

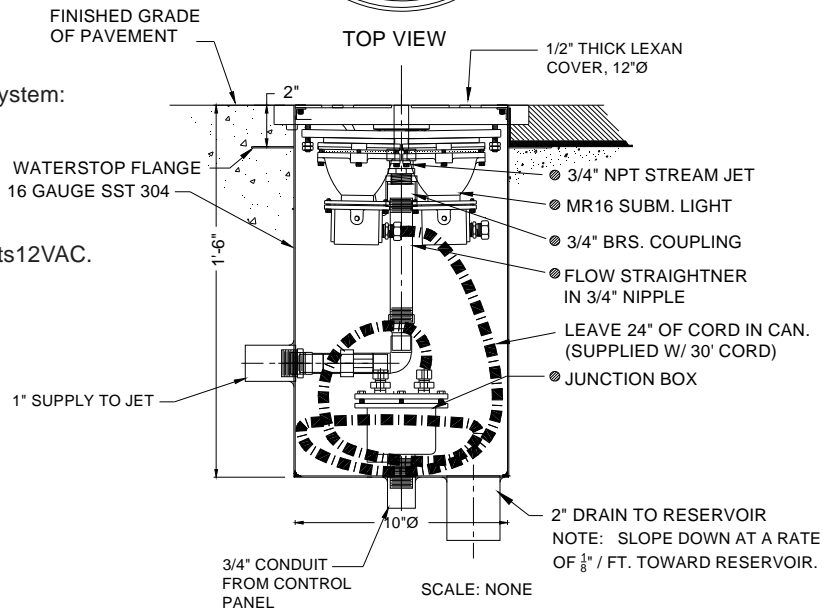
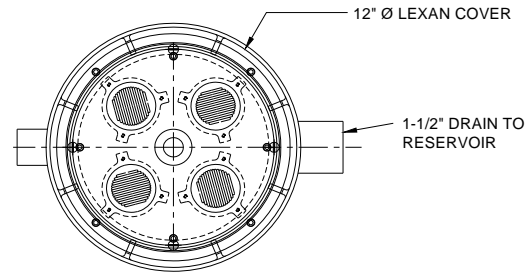
- #16 Gauge SST niche.
- 1-1/2" NPT drain connection, SST.
- 1" jet supply connection, SST.
- 3/4" NPT stream jet, 1/2" dia. stream.
- X ea. 75W max. MR16 style submersible lights 12VAC. (specify number of lights 1,2,3 or 4).
- 30' cords.
- 1 ea. junction box w/ X ea. cord seals.
- 3/4" flow straightner.
- cast bronze floor frame
- 0.500" thick machined LEXAN cover
- weight limit: 200 PSI

OPTIONS:

- Other jet and light combinations available.
- Specify number of lights.
- Specify wattage of lamps (50 or 75W).
- Colored lenses for lights (amber/blue/red/green).
- LED lights with DMX color control.
- Water switch operation.

IMPORTANT NOTE:

- * **WEIGHT LIMIT IS 2000 lbs. / sq.ft.**
- * install in a position to AVOID flooding of the surrounding area.
- * DO NOT install in a depressed position to allow the collection of debris.



IMPORTANT

Dimensions and/or Materials subject to change without notice

IMPORTANT

The designers, installers and end users utilizing the electrical equipment described herein assume full responsibility for the compliance with the N.E.C and it's applicable articles, intents and consequences. Where the manufacturer and/or the supplier of the electrical equipment described herein does not control the application or usage, he assumes no responsibility whatsoever for any consequences arising out of the application, installation and/or usage of this or any other equipment and/or materials