

DESCRIPTION

The **GEFCO #SK-Series Pump Skid** provides a pre-engineered and prefabricated pumping system attached to a fibergrate base with SST frame.

This system is usually desired when the pump system is to be located in either a mechanical room or placed underground in a concrete vault. All pumps, valves, and distribution manifolds are engineered to fit in a good tight space with all branches departing in the desired direction and is pre-assembled with connections provided for accepting pipe runs to and from the fountain.

A display pumping system consists of pump, suction and discharge manifolds with valve assemblies pre-assembled. This system will be designed and manufactured in accordance to flow rates, pressure ratings and number of discharges as set forth in the desired aesthetic. For filtration capabilities in conjunction with display pump, please see GEFCO #SKC-Series and GEFCO #SKS-Series filtration systems.

OPTIONAL ITEMS:

- Pressure Monitoring/ Control Systems.
- Fountain programming controls valves.
- Wind control monitoring and control valving system.

TYPICAL SPECIFICATIONS:

* **GEFCO #SK1000-00** Pumping Skid:

Display Pump is engineered, factory tested, and pre-assembled on a (2'- 0" x 6'- 0") pad.

* **GEFCO Select #PM-Series** Display Pump:
 - XX HP centrifugal pump, 460V (or 208V), 3 phase.
 - 1760 RPM (or 3450 RPM)
 - to deliver XX GPM at a TDH of XX'.

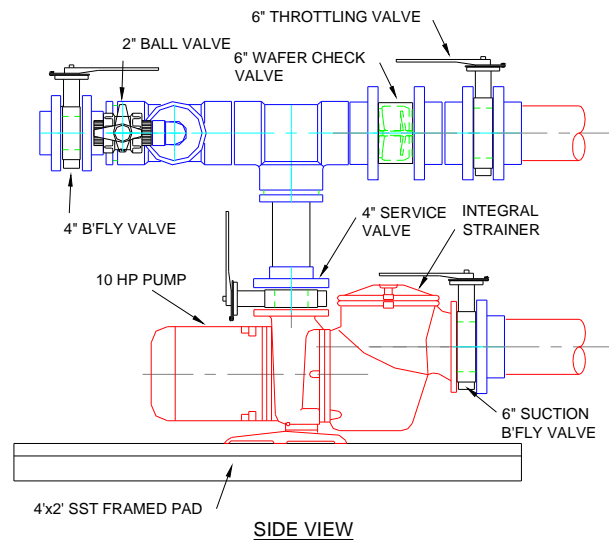
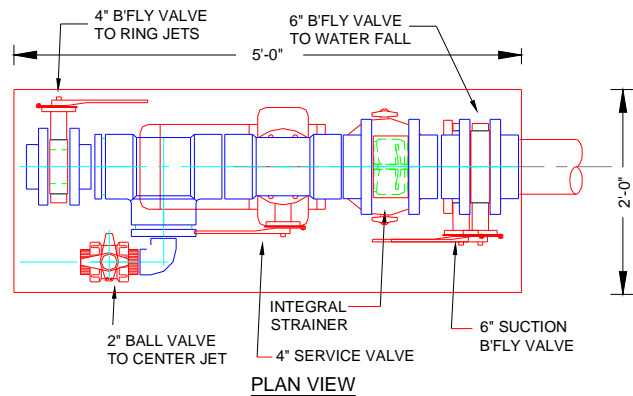
- Suction assembly includes the following:
 - X" PVC Sch 80 companion flange.
 - X" suction valve.
 - X" basket strainer.
 - Y" x Z" eccentric reducer.
 - non-asbestos flange seals.
 - stainless steel flange bolts, washers & nuts.
- Discharge assembly includes the following:
 - Y" x Z" concentric reducer.
 - X" service valve.
 - X" PVC SCH80 discharge manifold with:
 - X ea. Z" outlets (flanged / screwed).
 - X ea. Z" infinite position butterfly valves.
 - X ea. Z" PVC Sch 80 companion flanges.
 - X ea. Z" threaded ball valves.
 - non-asbestos flange seals.
 - stainless steel fasteners.

IMPORTANT NOTE:

For specific design assistance, material selections and/or equipment sizing contact your Georgia Fountain Company representative or the Main Office.

IMPORTANT NOTE:

Dimensions, Manufacturers and or Materials subject to change without notice.



EXAMPLE ONLY

SCALE: NONE