

**DESCRIPTION**

The **GEFCO Select #EE132SM Top Access SIDE MOUNT Multi Level Sensor** provides accurate measuring of the fountain water level where top access into the unit is desirable or in cases where it is not possible to install a sensor system in the pool wall. Water from the pool will enter into the unit through a bottom open static level pipe into the chamber where the sensors are located. The level is transmitted via static forces and is vented out the top of the sensor to atmosphere. The level can be observed through the clear PVC pipe.

The **GEFCO Select #EE132SM Top Access Side Mount Multi Level Sensor** is constructed of a bronze and SST fitted box with chambers made of copper. The access box is fitted with a 3/4" rigid 3" PIPE CLAMP (BY M.C.)

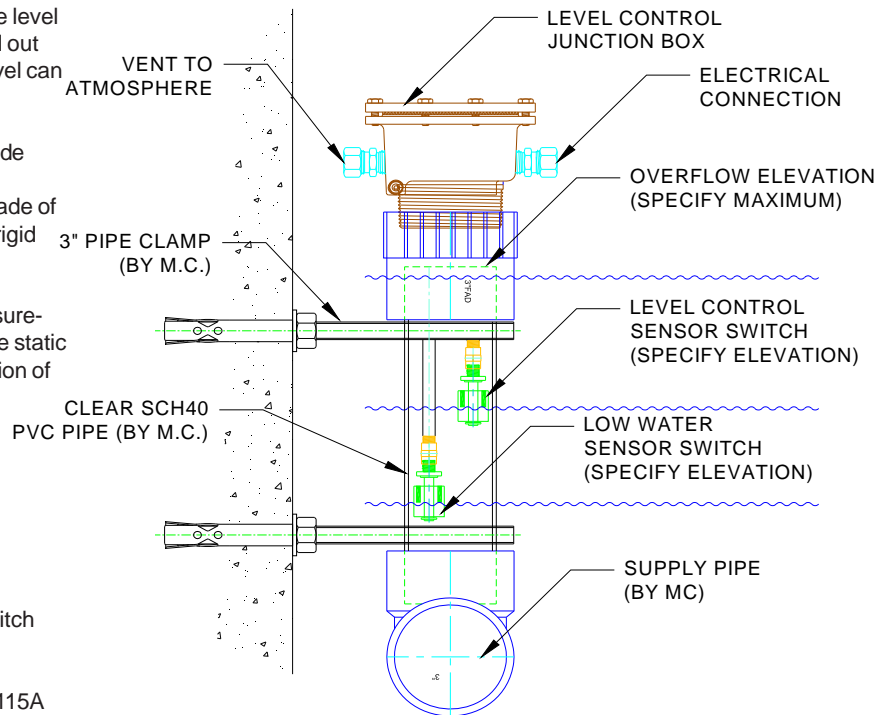
When specifying, please determine the measurements from finish access box elevation to the static line port. This will ensure the proper application of the unit.

**TYPICAL SPECIFICATIONS**

- \* **GEFCO Select #EE132SM Top Access Multi Level Sensor:**
- cast bronze; brass, SST & copper fitted
- surface mount cover plate
- 2 or 3 ea. perma magnet activated reed switch sensors.
- 12VDC, 0.5A non inductive.
- to be used in conjunction with **GEFCO #EE115A Monitor** or **GEFCO #EE140 Fountain Controller**.

**IMPORTANT**

*Dimensions and/or Materials subject to change without notice*



**IMPORTANT**

*The designers, installers and end users utilizing the electrical equipment described herein assume full responsibility for the compliance with the N.E.C and it's applicable articles, intents and consequences. Where the manufacturer and/or the supplier of the electrical equipment described herein does not control the application or usage, he assumes no responsibility whatsoever for any consequences arising out of the application, installation and/or usage of this or any other equipment and/or materials*