

DESCRIPTION

The **GEFCO Select #EE181 Series Wall or Pole Mounted Touch Sensor** provides a non-inductive single combination fixture which accommodates a touch sensor **WITHOUT** the need for contact by any person.

TYPICAL SPECIFICATIONS:

* **GEFCO Select #EE181W** Wall Mounted Touch Sensor:

- anti-deposit angled surface PVC cap.
- flush mounted 8-32 fasteners.
- 2.5" " x 4.5" deep PVC forming cup.
- 3/4" approach sensitivity
- 10-30VDC, 0.05A, capacitive type.
- 1 ea. 3/4" NPT side connected conduit entry.
- to be connected to GEFCO #EE140 Fountain Controller.
- SOLD SEPERATELY

IMPORTANT INFORMATION:

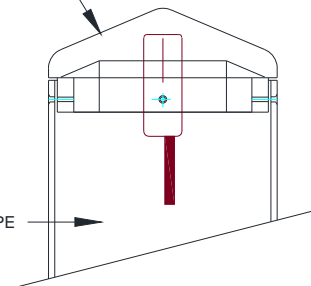
* **Wall thickness to be min. 6"**

GEFCO Select #EE181P POLE Mounted Touch Sensor:

- 4" DIA machined PVC80 cover plate +/-.
- anti-deposit angled surface
- 8-32 SST round head fasteners.
- for mounting on 4" SCH10 SST or copper pipe.
- 3/4" approach sensitivity (adjustable +/-)
- 10-30VDC, 0.05A, capacitive type.
- 6 feet of cable.
- to be connected to GEFCO #EE140 Fountain Controller.
- SOLD SEPERATELY

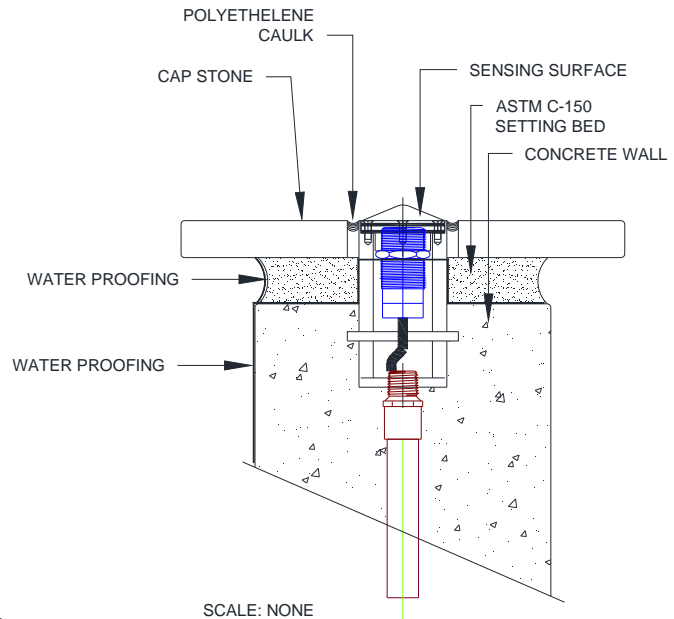
DELRON OR PVC80
SLOPPED SURFACE
TO PREVENT FOREIGN
DEPOSITS OR WILD LIFE

4" COPPER OR SST PIPE



IMPORTANT NOTE

The designers, installers and end users utilizing the electrical equipment described herein assume full responsibility for the compliance with the N.E.C and it's applicable articles, intents and consequences. Where the manufacturer and/or the supplier of the electrical equipment described herein does not control the application or usage, he assumes no responsibility whatsoever for any consequences arising out of the application, installation and/or usage of this or any other equipment and/or materials



IMPORTANT NOTE

Materials, dimensions and methods subject to change with out notice