



GEFCO SELECT EE-963 DMX ANALOG SYSTEM

DESCRIPTION

The **GEFCO Select #EE-963** DMX Controlled ANALOG System provides a series of 8 each 0-10VDC control signals under the control of 8 DMX channels for 8 individual 0-10V commands. The board is DMX addressable using the on-board DMX DIP Switch to set individual DMX address along with DMX termination terminal.

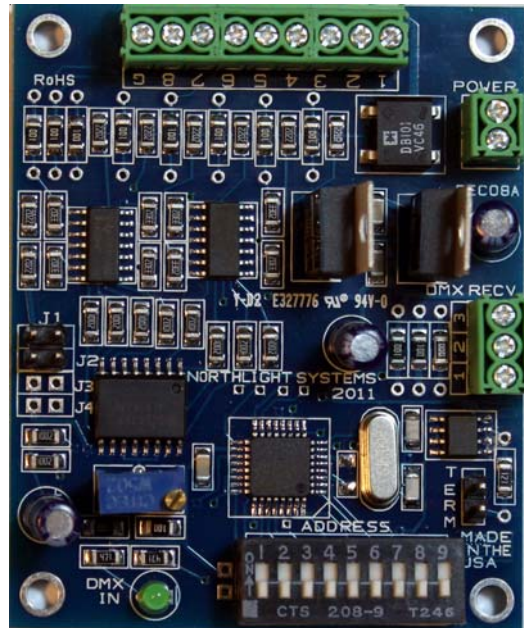
THESE SIGNALS ARE DIMMABLE.

The commands can be controlled from any DMX control device or a GEFCO Select #EE965, #EE966 or #EE960 RGB DMX Controller (ORDER SEPARATELY) that will control up to 512 control points per Universe or other DMX sources. This system is open frame and mountable in an optional plastic NEMA 1 enclosure.

Final Assembly in the USA

TYPICAL SPECIFICATIONS:

- * **GEFCO Select #EE-963** DMX Controlled Analog System:
 - printed circuit board
 - 8 ea. 0-10VDC outputs
 - 15-24VDC control power
 - 10 position DMX Address switch.
 - on board DMX activity LED light
 - DMX input terminals.
 - DMX termination resistor terminal w/ closing jumper
 - Screw clamp type wire terminals.
 - 2-1/4" x 3" x 1" open frame
 - mountable in control panels or optional NEMA 6" x 6" x 4" enclosures
 - weight: WITH enclosure 1 lbs.



IMPORTANT

The designers, installers and end users utilizing the electrical equipment described herein assume full responsibility for the compliance with the N.E.C. and it's applicable articles, intents and consequences. Where the manufacturer and/or the supplier of the electrical equipment described herein does not control the application or usage, he assumes no responsibility whatsoever for any consequences arising out of the application, installation and/or usage of this or any other equipment and/or materials.

IMPORTANT

Dimensions and/or Materials subject to change without notice