

**DESCRIPTION**

The **GEFCO Select #PE105 Non-adjustable Niche Overflow Fitting** is placed in walls above static water level for over fill protection, usually in the lowest pool.

Bronze construction with integral grounding screw, the overflow fitting has a 2" female connection and is normally connected directly into the main drain line, via 2" piping. Slotted face plate prevents floating debris from entering drain line. One overflow fitting will accommodate approximately 350 square feet of pool area. More may be needed or utilization of a larger overflow fitting in case of larger pools.

The GEFCO Select #PE105-2 Overflow Fitting may also be utilized for small equalization line screens, or as ventilation fittings depending on application.

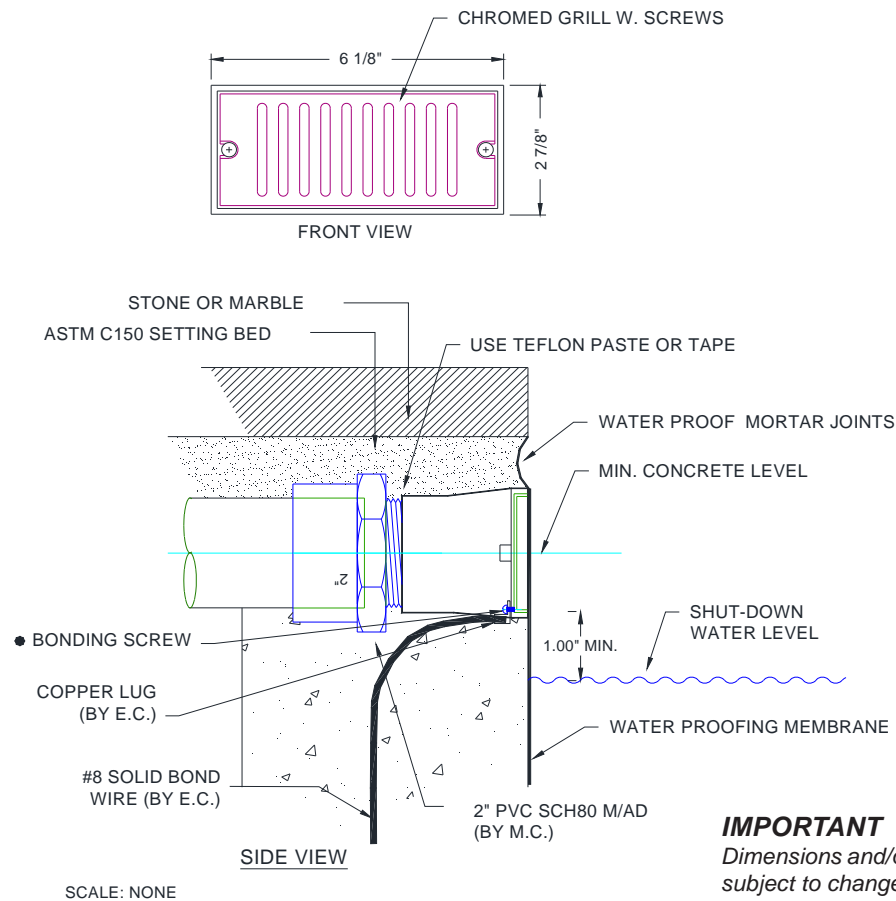
**TYPICAL SPECIFICATIONS:**

**\* GEFCO Select #PE105-2 WALL NICHE OVERFLOW:**

- cast bronze body.
- slotted grate with 5 sq. inches open area and chrome plated.
- 3" x 6" rectangular face.
- bonding screw.
- 2" female N.P.T. connection.

**REPLACEMENT PARTS:**

- 1 Grate.
- 2 Grate Screws.



**IMPORTANT**  
Dimensions and/or Materials  
subject to change without notice