

DESCRIPTION

The **GEFCO Select #PE106-X Overflow/Drain Standpipe** serves as an overflow fitting and as a main drain fitting. With the standpipe in place, this fitting provides overflow protection allowing water that surpasses the height elevation of the pipe to drain into the main drain line. When the pipe is removed, water in the entire pool basin will drain. The 4" female NPT connection base is embedded in the pool floor. The removable standpipe is then put in place and allows the water level to rise to the top of the standpipe. The top of the standpipe is protected with a cast bronze cap. A screen around the base helps to prevent unwanted debris from entering the drain line.

When specifying, please use the following suffix to ensure that the proper fitting is provided:

*** GEFCO Select #PE106-**

- 2 2" DIA. Standpipe, 18" long.
- 3 3" DIA. Standpipe, 18" long.
- 4 4" DIA. Standpipe, 18" long.

OPTIONS:

Standpipes longer than 18" can be supplied at additional costs(Please Specify.)

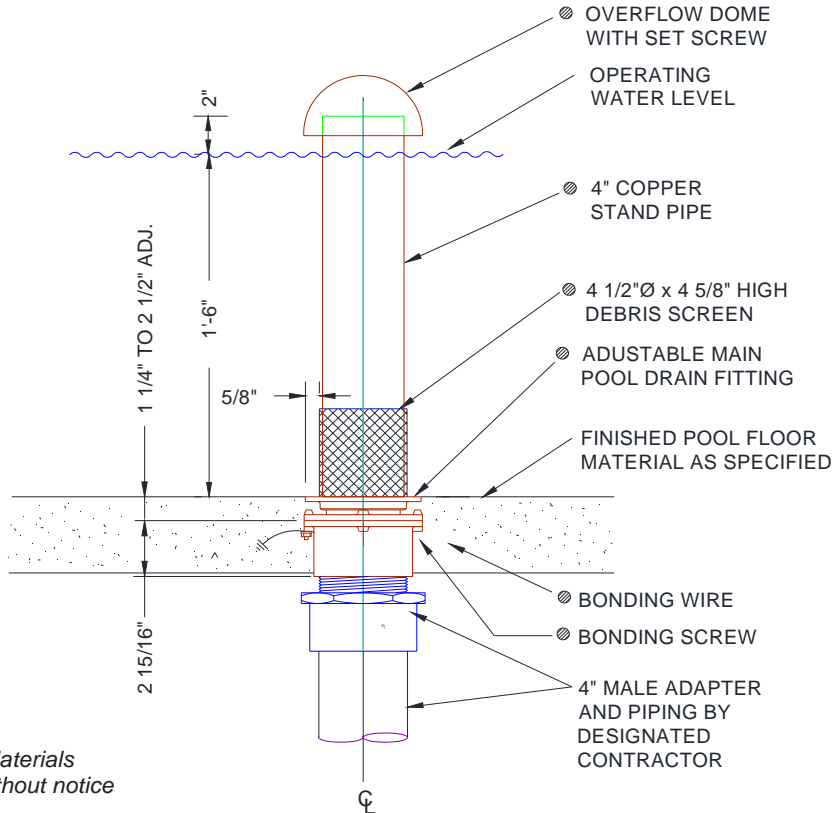
TYPICAL SPECIFICATIONS:

*** GEFCO Select #PE106-X Overflow/ Drain Standpipe:**

- cast bronze base with brass trash screen.
- adjustable base with lock ring.
- 18" tall, copper standpipe, and neoprene O-ring.
- cast bronze cover dome.
- 4" female N.P.T. connection.

REPLACEMENT PARTS:

- 1 Turtle cap
- 2 Base seal (O-ring)
- 3 Trash screen



IMPORTANT
Dimensions and/or Materials
subject to change without notice