

**DESCRIPTION**

The **GEFCO Select #SE158-Series Lake Geyser Jet** is water level dependent and produces a wide, fluffy 'White Water Geyser' spray effect that is highly visible for long distances. Normal application is in floating lake fountains and lake aerators that require a highly visible spray effect with an approximate spray diameter at its base of more than 50 % of spray height. This jet can produce about the greatest spray filled volume of air of any single spray jet. The spray effect is adjustable as to appearance (density) and height by adjusting the immersion of the jet discharge. The air intake snorkels (4) are fixed. The immersion ('UWD2') adjustment of the discharge can be affected from above water level by turning the lift bolts (4) with a wrench clockwise (1/2 turn each, one after the other) to raise the spray, counter clockwise to lower the spray. These must be protected from pool surging when used in smaller pools or ponds.

A GEFCO Select #SE137-Series Adjustment Flange is designed to correct the vertical adjustment of sprays up to 5 degrees off of vertical. For larger degree adjustments use a GEFCO Select #SE138-Series Adjustment Union.

The Water Level Independent Foam Jet can be installed on a GEFCO #PE109-Series Slab Penetration which will provide a rigid non-corrosive, waterproofing penetration.

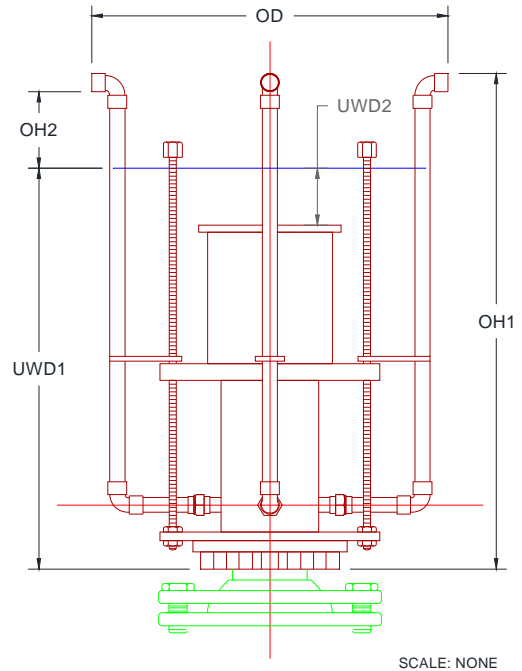
**TYPICAL SPECIFICATIONS:**

- \* **GEFCO Select #SE158** Lake Cascade Jet:
- made of cast bronze and brass fitted.
- SST adjustments.
- 6" NPT connection.

**ADDITIONAL INFORMATION:**

- **Pressures greater than shown cause damage to jets**

The performances shown are for undisturbed, liner inflow into jet at given 'UWD2' immersion. Performances are extremely variable due to different 'UWD2' dimensions and sleeve adjustments. So greater the 'UWD2' dimensions, so heavier and wider the spray, but also so greater the intake pressure and flow requirements. If at an installation, the jet operates too high and thin, then lower the whole jet and extend the air snorkel tubes (3/4" American size copper tube) until the desired effect has been achieved. For directional adjustment mount jet on to (08-10) 6" Adjustment Flange. Supply pipe must be flow sized.



DIMENSIONS: (IN INCHES)			
T	6		
OH1	22.050		
OH2	3.940		
OD	21.260		
UWD1	17.330		
UWD2	VARIABLE; SEE BELOW		
PERFORMANCES:			
UWD2	2.000	4.000	
SS	1.5"	1.5"	
SH	GPM	FH	GPM FH
10	370	20	590 50
20	540	40	840 100
50	800	100	1300 250
80	1100	160	1400 400
100	1200	200	1650 500

**IMPORTANT REQUIREMENT**

*Designers and Engineers shall be responsible for the accuracy of system flow rates and especially system head loss requirements. Stated flows and head pressure requirements for any listed spray height are required AT THE NOZZLE. Extrapolations for unlisted spray heights are at the sole responsibility of the Designers and/or Engineers.*

**IMPORTANT**

*Dimensions, Manufacturers and/or Materials subject to change without notice*