

DESCRIPTION

The **GEFCO Select #SE163 Series Play Foam Geyser Jet** provides a single frothy column of water at ground level using the pooling water around the jet for the effect.

IMPORTANT NOTE: Once the system is installed **there is NO ADJUSTMENT possible.**

DIMENSIONS:	
T	3/4" + 1-1/2"
OH	2.360"
OD	2.760"
N	12 + 1
OS	.094"

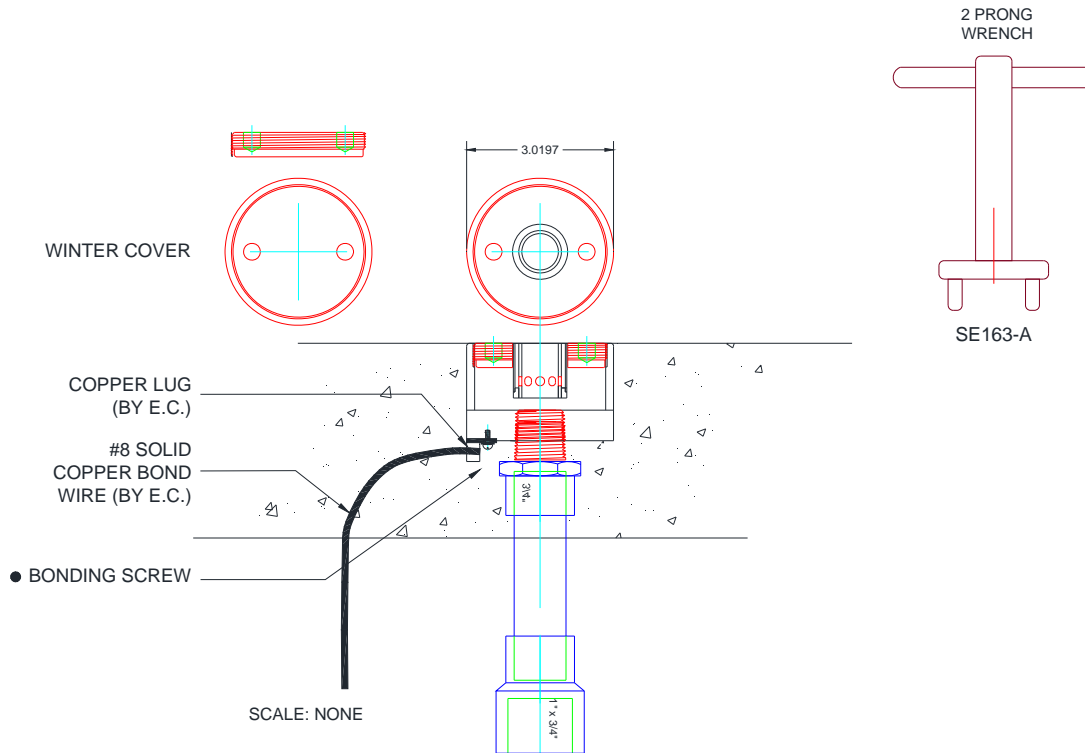
TYPICAL SPECIFICATIONS:

- * **GEFCO Select #SE163 Play Foam Geyser :**
- Jet made of cast bronze and brass fitted.
- 1" N.P.T. female connection
- 1 ea. Winter Cover.
- 1 ea. Spanner Wrench

PERFORMANCES:			
SH	SD	GPM	FH
4'	2'	10	6'
5'	3'	12	7'
6'	4'	14	8'
8'	5'	18	11'
10'	6'	22	16'

ADDITIONAL INFORMATION:

- * **MAX. Suction straining to be: 0.500" min.**



IMPORTANT REQUIREMENT

Designers and Engineers shall be responsible for the accuracy of system flow rates and especially system head loss requirements. Stated flows and head pressure requirements for any listed spray height are required AT THE NOZZLE. Extrapolations for unlisted spray heights are at the sole responsibility of the Designers and/or Engineers.

IMPORTANT

Dimensions, Manufacturers and/or Materials subject to change without notice